



SAFETY AT THE HIGHEST LEVEL
6.6ft (2m) Solar Platform
Assembly Instructions



Temporary access device conforming to the test requirements of
CSA Z271-10, CSA B354.5-07, CSA Z797-09,
OH&S Act and Regulations for Construction Projects 213/91,
OSHA S.1926.451 & ANSI A10.8-2011

USA

Kee Safety, Inc.
100 Stradman Street
Buffalo, NY14206

Tel: (716) 896 4949
Fax: (716) 896 5696
Toll Free: (800) 851 5181
www.keesafety.com
Email: info@keesafety.com

Canada

Kee Safety, Ltd.
40 North Rivermede Rd., Units 6-7
Concord, Ontario L4K2H3

Tel: (905) 669 1494
Fax: (905) 669 4347
Toll Free: (877) 505 5003

PLEASE BE ADVISED: Before assembling the Solar-Platform for the first time, it is highly recommended that Installers familiarize themselves with the component parts and carry out a test assembly and disassembly in a safe area away from the point of final installation. All component parts detailed in the operating instructions must be used in the assembly of the system. Should a piece be missing or appear defective do not continue to assemble and contact Kee Safety immediately.

Step 1



Lay out the components ready for assembly with the platform against the wall with rolling window bar on the ground. Identify the corresponding leg for each side of the platform (Green - Left / Red - Right)

Step 2



Install both Legs using the pins and 'R' Clips provided and ensure that the pins are inserted outside in, to minimize the risk of the 'R' Clips being knocked out. **REMEMBER:** Install the Legs to the 'Normal use' hole labelled on the underside of the platform.

Step 3



Rotate the Dec support struts and secure with the pins and 'R' Clips provided.

Step 4



Pull out the clips and release the two Cross Braces from their stored position.

Step 5



Slide the Horizontal Cross Brace over the retaining studs.

Step 6



Swing out each brace over to the opposite Leg and secure onto the retaining stud using the two 'R' clips provided.

Step 7



Lift the Solar Platform up to waist with using bent legs and a straight back, first to waist height, then using your arms, place it against the wall and roll it up into position.
NOTE: Pay particular attention to the balance of the Solar Platform, the position of the handhold, and the way the Claw grips while taking a second handhold.

Step 8



Adjust the height by removing the two Leg Pins and rolling the Solar Platform up the wall to the desired height and replace both Leg pins remembering to also replace the safety 'R' Clips provided. After adjusting to height it will be necessary to re-level the Solar Platform by moving the feet either away or towards the wall.

Step 9



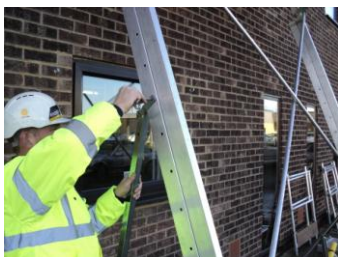
The Feet may be adjusted in 1.2in (30mm) increments but in extreme cases either Leg can be adjusted Independently. Insert Pin and 'R' Clip to secure.

Step 10



Position the back Legs by removing the middle pin first, holding onto it and lowering the brace.

Step 11



Remove top pin and attach the back Leg at about eye level.

Step 12



When securing the Brace, position the foot as close to the wall as possible without contacting the wall or touching the ground. Insert the pin and 'R' Clip.

Step 13



Drop the feet to the ground and take it up to the next hole and secure with the pin and 'R' Clip. Ideally a finger's clearance under them to ensure the Solar Platform remains in contact with the wall.

Step 14



The Ladder is placed against the Platform, extended 3 feet (approximately 1 meter) above platform level between the Tie in Lugs of the Platform and shifted to the right to allow room to the left between ladder and gate.

Step 15



Fig 1 Easi-Dec Ladder spurs.

Secure the Ladder Base or use a suitable Ladder safety device, such as Easi-Dec Ladder spurs shown in **Fig 1**. Climb the ladder and Tie off both sides with the Ladder ties provided.

Step 16



Position the Guardrail over your shoulder, when climbing the Ladder maintaining three points of contact. **REMEMBER:** When installing the Guardrail to the right hand side of the Platform carry up on the right shoulder and these steps are repeated for the Left side.

Step 17



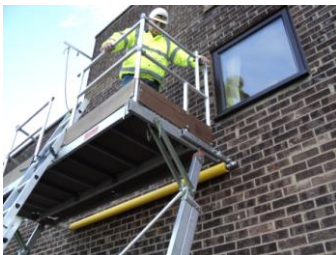
Feed one arm through the top rung of the Ladder. This provides a handhold when installing the Guardrail into position. **(NOTE: This is why the Ladder needs to be extended above the platform by 3 feet (approximately 1 meter) to provide a handhold.**

Step 18



Insert the Right hand guardrail into the two front sockets and gently ease the back of the Guardrail open. **REMEMBER:** Always have your arm through the top rung of the Ladder when positioning these guardrails. Repeat these steps for the Left hand Guard rail.

Step 19



Climb onto the Platform and position the rear uprights into the rear locating sockets on the platform for both the Left and right handed Guardrail.

Step 20



Close the Safety Draw Bar and lock in to position.

Step 23



The pulley frame, support frame, lifting beam and pulleys needs to be secured before lifting using the supplied C/W straps. Then tie rope around the top part of the frame ensuring its properly secure ready for lifting. Close the safety gate then hoist the pulley frame to the platform.

Step 24



Attach the support frames at both ends to the retaining sockets ensuring the flange is clear of the hatch and flush with the Dec.

Step 25



Attach the support tubes at both ends to the lifting beams by removing the retaining pins in the two small holes at each end of the support tubes. These are then locked into the larger holes on the underside of the Beam. The pins are then replaced locking them into position

Step 26



Lift the whole assembly by holding the support tubes and then position these tubes over the Hole in the end support frames.
NOTE: Erecting the beam and pulley hoist assembly is assembled and positioned from the platform by two operators.

Step 27



FIG.2 Clutch

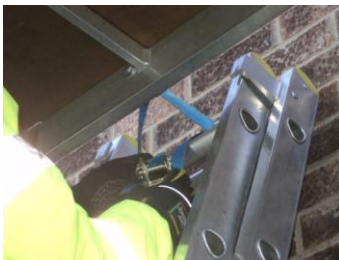
A 'TEST RUN' of the Lifting mechanism should be completed before use. Lower the lifting beam through the hatch releasing the clutch handle slowly while maintaining a grip on the rope. **Fig 2.** shows the clutch in the open position

Step 28



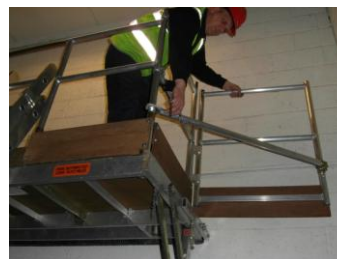
Remember when the load is sufficiently high enough to clear the Hatch, close it and Lower the Load onto the Platform in order to release the straps. The solar platform is now ready for use.

TOP FIX



For additional safety the Solar Platform can be tied off to the wall.

Winged Gates (Optional)



When fitting the (optional) winged gates follow the erection procedure outlined in **STEPS 17 & 18**. Open the Winged gate from behind the Guardrail and swing the gate into position using the Diagonal brace. Fix the front upright to the front upright. This is repeated for the Left hand rail.

Remember

- Back legs must be installed.
- Never exceed the 165lb (75 Kg) Load restriction on the Hoist
- All Ladders should be erected using 4:1 rule and tied off for maximum safety
- Always assess the site for suitability. Spiking of the feet maybe required.
- Always tie off the Dec's to the structure with a suitable anchor for the base material and make sure it is installed correctly as per manufacturer's instruction.
- Always strap the staging securely onto the platform.
- Maximum load of 750lb including hand tools evenly distributed.

Dismantle: Reverse the above procedure.